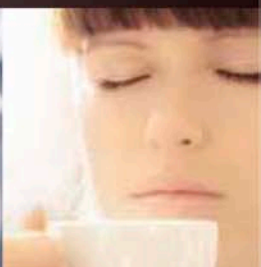
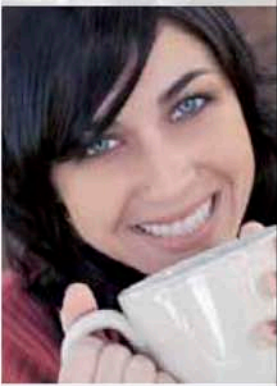




The
VIENNA

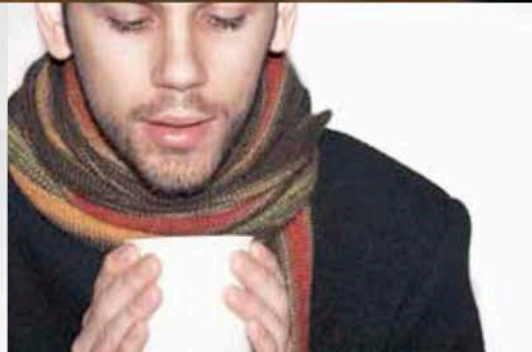


enjoy the experience



enjoy the experience

enjoy the experience



The VIENNA



The Vienna by DarenthMJS represents a completely new approach to machine design and has been exclusively styled to compliment the high quality of beverages produced. At less than 6.5 inches wide this incredible, technologically advanced speciality beverage machine will fit just about anywhere and delivers superb quality speciality drinks from the push of just one button.

Whether it's simply a smooth, dark and aromatic black coffee that 'takes your fancy', a highly whipped and frothy, deliciously tempting cappuccino, or a rich, creamy indulgent café mocha, the incredibly compact, feature packed and totally dependable Vienna by DarenthMJS does it all with style and complete convenience.



CARBON FIBRE



NEW and exclusive!
Carbon fibre effect limited edition model



Optional side panels available to enhance the Vienna's superb presentation yet further

DRINK SELECTION

The Vienna features 10 chrome effect, one touch drink selection keys as standard (9 drink choices plus hot water dispense).

All drink option keys are entirely reconfigurable for any choice of recipe selections.

Optional 'Go Large' and 'Strength Adjustment' features to enhance user choice still further.



RED METALLIC



SILVER METALLIC



BLUE METALLIC



BLACK TEXTURED

All machines in the DarenthMJS speciality range feature hugely powerful, frequency locked ingredient motors including all metal gearboxes and high speed, precision balanced whipper motors. Ask your dealer to compare this to other machines!

The Vienna is available in a number of different colour options including a superb range of metallic effect, high gloss presentations including the stunningly new and exclusive carbon fibre effect, limited edition model. All versions feature chrome effect push buttons and highly polished stainless steel trim as standard.

OTHER FEATURES

Brightly illuminated stylish display panel to increase user appeal.

Extremely user friendly, single button operation.

Free flow or timed hot water dispense facility.

Chrome effect push buttons and stainless steel trim used generously throughout.

Built in flush facility to maintain interim hygiene and all drink contact components are easily removable for cleaning.

High capacity drip tray, with stainless steel feature trim and electronic level sensor fitted as standard.

Optional I-Key cashless payment system - total cost control for the first time ever on a machine of this size.

Extra wide chocolate canister fitted as standard.

Full audit facility fitted as standard.

VIENNA



STANDARD DRINKS MENU

(Others can be added!)

CAFÉ NOIR

Smooth, dark, rich and aromatic black coffee.

ESPRESSO

Small and strong rich italian style black coffee.

CAFÉ LATTE

Highly whipped and frothy, milky white coffee.

CAPPUCCINO

Traditional Italian beverage blended from coffee and whipped topping.

CAFÉ AU LAIT

Continental French style white coffee.

CAFÉ MOCHA

Delightful combination of hot, whipped chocolate and dark, rich, coffee.

ESPRESSO CHOC

Hot, whipped, milky chocolate, topped with Espresso chocolate.

CHOCOLATE

Smooth and satisfying, highly whipped, hot chocolate.

FROTHY CHOC

Smooth hot chocolate blended with additional creamer.

Individual drink strength AND portion size to customer taste!

The
VIENNA



TOTAL DESIGN & MANUFACTURE

DRINKS MENU AND CAPACITY

Selections:

10 chrome effect, one touch selection keys as standard (pre-programmed for 9 delicious speciality beverages plus hot water dispense).

All drink option keys are entirely reconfigurable for any choice of recipe selections.

Optional 'Strength Adjustment' key allow users to perfect drink makeup to individual taste preference.

Optional 'Go Large' key enables the same machine to deliver different portion sizes without losing any menu selections.

3 ingredient canisters:

Coffee canister capacity: 1.4ltrs.

Whitener/topping canister capacity: 1.4ltrs.

Chocolate canister capacity: 2.2ltrs.

WATER REQUIREMENTS:

Mains water connection via 3/4" BSP fitting (connection hose available).

Mains water pressure 1.5 - 10 bar (0.15 Mpa - 1Mpa).

Optional pumped water system (from storage vessel situated in base cabinet) ideal for occasional situations where a mains water supply cannot be provided.

POWER REQUIREMENTS:

220-240 V, 50 Hz, single phase.

2.5 KW, 13 A plug fuse.

Machine fitted with 1.4 metre mains lead.

DIMENSIONS (WxHxD):

Machine: 165mm x 658mm x 515mm

WEIGHT:

Machine: 19Kg



The Vienna is also available in a range of branding options, including the superb Kenco presentation shown here

PAYMENT SYSTEMS:

Although predominantly designed as a free vend machine, the Vienna can be fitted with the I-Key cashless payment system to provide a complete payment or cost control solution.

OPTIONS

'Strength Adjustment' option - provides users with the additional benefit of adjusting drink strength to their own individual taste preference - a unique feature on this size of machine.

'Go Large' option - provides the additional facility of dispensing differing portion sizes from the same machine without having to compromise any selection keys. Cup sizes are fully programmable as is a price premium for the larger drink on a machine fitted with payment system.

Hygiene kit comprising of complete set of mixing chambers, paddles, hoses, nozzles, etc.

High quality water filtration system for optimum drink quality.

Extremely stylish side mounted graphic panels to enhance user appeal yet further.



DarenthMJS Ltd have a policy of continual improvement and reserve the right to modify and/ or change specifications without notice.

All dimensions and capacities shown are approximate and for guidance only. E & OE.



DarenthMJS recommend and supply the complete range of EVERPURE water filtration technology.



For Your Coffee & Tea

EMAIL sales@ksv.co.uk
WEBSITE www.ksv.co.uk

CALL FREE 0800 393160
OR CONTACT US FOR MORE INFORMATION
UK enquiries only