

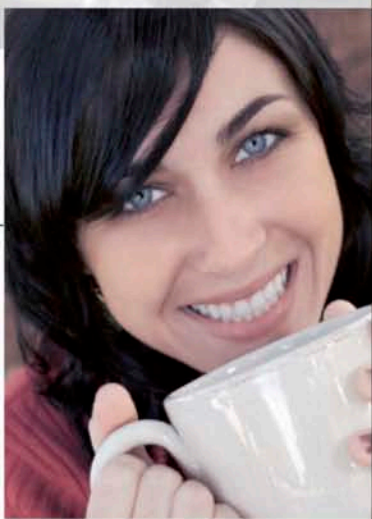


The  
**SIENNA**

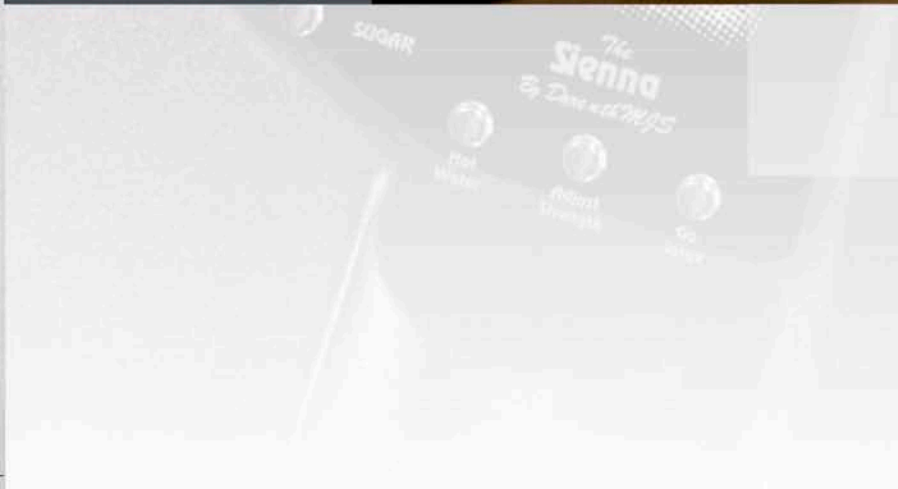


enjoy the experience





enjoy the experience





# The SIENNA



The Sienna by DarenthMJS presents a futuristic approach to machine design and features exclusive styling with fine lines to perfectly compliment the high quality of beverages produced. This highly featured, superbly styled beverage dispense machine is the perfect choice where a wide range of deliciously tempting, freshly made hot drinks are required.

Whether it's simply a smooth, dark and aromatic black coffee that 'takes your fancy', a highly whipped and frothy, deliciously tempting cappuccino, or a rich, creamy indulgent café mocha, the incredibly compact, feature packed and totally dependable Sienna by DarenthMJS does it all with style and complete convenience.

CARBON  
FIBRE



NEW and exclusive!  
Carbon fibre effect limited  
edition model



Sienna shown with  
optional coin mechanism

## DRINK SELECTION

The Sienna features 11 chrome effect, one touch drink selection keys as standard (9 drink choices plus sugar and hot water dispense).

All drink option keys are entirely reconfigurable for any choice of recipe selections.

Optional 'Go Large' and 'Strength Adjustment' features to enhance user choice still further.





RED  
METALLIC

SILVER  
METALLIC

BLUE  
METALLIC

BLACK  
TEXTURED

All machines in the DarenthMJS speciality range feature hugely powerful, frequency locked ingredient motors including all metal gearboxes and high speed, precision balanced whipper motors. Ask your dealer to compare this to other machines!

The Sienna is available in a number of different colour options including a superb range of metallic effect, high gloss presentations including the stunningly new and exclusive carbon fibre effect, limited edition model. All versions feature chrome effect push buttons and highly polished stainless steel trim as standard.

## OTHER FEATURES

Extremely user friendly, single button operation  
Brightly illuminated, attractive display panel to enhance user appeal.

Optional electronic coin validator and I-Key cashless payment system.

Full audit facility included as standard.

High capacity drip tray, with stainless steel feature trim and electronic level sensor fitted as standard.

Chrome effect push buttons and stainless steel trim used generously throughout.

Built in flush facility to maintain interim hygiene and all drink contact components are easily removable for cleaning.

Free flow or timed hot water dispense facility (can be charged for on coin operated machine).

Entirely separate mixing stations for each ingredient to prevent cross contamination of taste and allow total flexibility in recipe selection (ideal for soups, etc).



THE SIENNA



## STANDARD DRINKS MENU

(Others can be added!)

### CAFÉ NOIR

Smooth, dark, rich and aromatic black coffee.

### ESPRESSO

Small and strong rich italian style black coffee.

### CAFÉ LATTE

Highly whipped and frothy, milky white coffee.

### CAPPUCCINO

Traditional Italian beverage blended from coffee and whipped topping.

### CAFÉ AU LAIT

Continental French style white coffee.

### CAFÉ MOCHA

Delightful combination of hot, whipped chocolate and dark, rich, coffee.

### ESPRESSO CHOC

Hot, whipped, milky chocolate, topped with Espresso chocolate.

### CHOCOLATE

Smooth and satisfying, highly whipped, hot chocolate.

### FROTHY CHOC

Smooth hot chocolate blended with additional creamer.

Individual drink strength AND portion size to customer taste!

The  
**SIENNA**





# TOTAL DESIGN & MANUFACTURE

## DRINKS MENU AND CAPACITY

### Selections:

11 chrome effect, one touch selection keys as standard (pre-programmed for 9 delicious speciality beverages plus sugar and hot water dispense). All drink option keys are entirely reconfigurable for any choice of recipe selections. Optional 'Strength Adjustment' key allow users to perfect drink makeup to individual taste preference. Optional 'Go Large' key enables the same machine to deliver different portion sizes without losing any menu selections. Optional 'Go Decaf' key allows users the facility to have decaffeinated coffee used in their recipe selection instead of standard ingredient.

### 4 ingredient canisters:

All easily refillable and removable for cleaning. Each canister 1.7ltrs capacity.

## WATER REQUIREMENTS:

Mains water connection via 3/4" BSP fitting (connection hose available).

Mains water pressure 1.5 - 10 bar (0.15 Mpa - 1Mpa).

Optional pumped water system (from storage vessel situated in base cabinet) ideal for occasional situations where a mains water supply cannot be provided.

## POWER REQUIREMENTS:

**Standard machine:** 220-240 V, 50 Hz, single phase. 2.5 KW, 13 A plug fuse.

Machine fitted with 1.4 metre mains lead.

**22A heater upgrade:** 220-240V, 50Hz, single phase. 5 KW, 22A (must be connected by a qualified electrician to 30A supply via suitable isolating switch).

## DIMENSIONS (WxHxD):

**Standard Machine:** 362mm x 650mm x 539mm

**Coin operated Machine:** 456mm x 650mm x 539mm

## WEIGHT:

**Standard Machine:** 37Kg

**Coin operated Machine:** 39Kg

## PAYMENT SYSTEMS:

Available as a free vend machine or fitted with full electronic coin mechanism which accepts all coins plus token.

Separately locking cash box.

Free vend master override switch.

I-Key cashless payment system compatible.

Individual drink pricing together with entirely separate discount price structure (for use with I-Key system).

Electronic interface facility to host partner machines.

## OPTIONS

'Strength Adjustment' option - provides users with the additional benefit of adjusting drink strength to their own individual taste preference - a unique feature on this size of machine.

'Go Large' option - provides the additional facility of dispensing differing portion sizes from the same machine without having to compromise any selection keys. Cup sizes are fully programmable as is a price premium for the larger drink on a machine fitted with payment system.

'Go Decaf' option - a superb feature which allows users to choose to have decaffeinated coffee used in their recipe (fits in canister 4 on this machine).

Hygiene kit comprising of complete set of mixing chambers, paddles, hoses, nozzles, etc.

High quality water filtration system for optimum drink quality.

22Amp heater upgrade.



» The Sienna is also available in a range of branding options, including the superb Kenco presentation shown here



DarenthMJS Ltd have a policy of continual improvement and reserve the right to modify and/ or change specifications without notice.

All dimensions and capacities shown are approximate and for guidance only. E & OE.



DarenthMJS recommend and supply the complete range of EVERPURE water filtration technology.



**EMAIL** [sales@ksv.co.uk](mailto:sales@ksv.co.uk)  
**WEBSITE** [www.ksv.co.uk](http://www.ksv.co.uk)

**CALL FREE 0800 393160**  
OR CONTACT US FOR MORE INFORMATION  
*UK enquiries only*