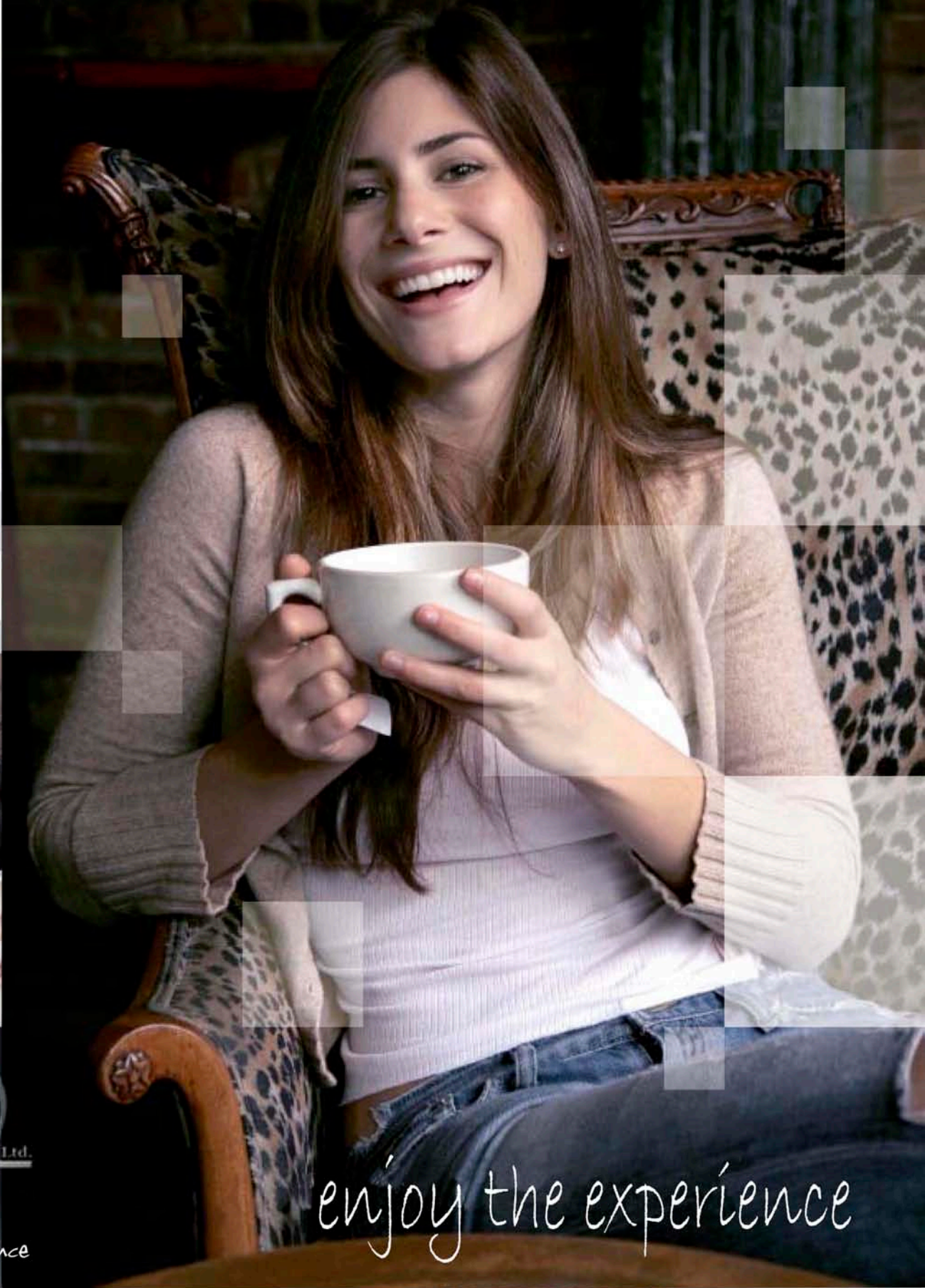




The  
**MINICUP**  
flex



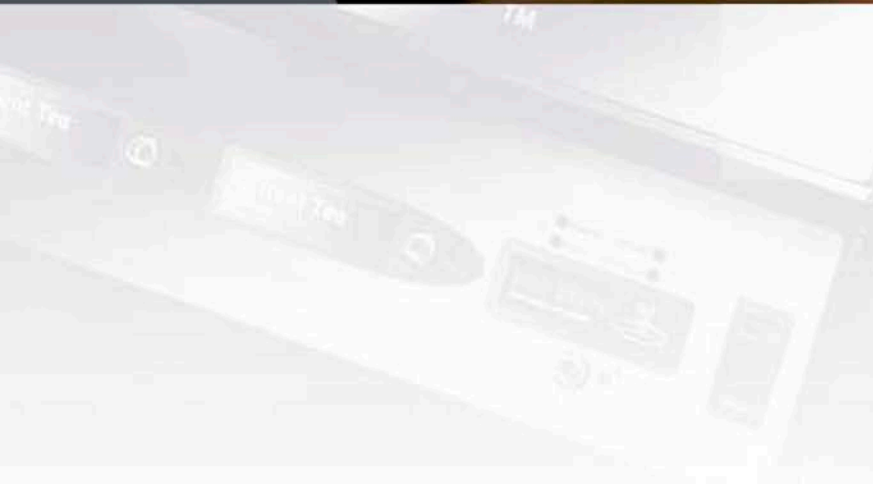
enjoy the experience



*enjoy the experience*



*enjoy the experience*



# The MINICUP flex

The ideal solution for the smaller user who requires a simple and extremely cost effective refreshment solution.

This remarkable little machine features a highly flexible specification enabling it to be easily customised to meet individual requirements.



5 selection (manual)  
Minicup Flex shown with  
matching base cabinet



4 selection (automatic) Minicup  
Flex shown with side mounted  
electronic sugar dispenser and  
partnered with the WaterBoy  
rehydration station



## DRINK SELECTION

This compact, yet highly functional little machine offers a choice of either 5 (manual) or 4 (push button automatic) delicious in-cup drink selections.

Sugar can also be electronically dispensed, either in place of a drink selection (on the push button machine) or from the optional, side mounted sugar dispense unit.



➤➤➤ Minicup Flex partnered with the SnackBreak MINI (shown here both featuring optional Kenco livery) - the ideal "pick me up" station



➤➤➤ Minicup Flex partnered with the IceBreak can dispenser - a superb total refreshment solution

## OTHER FEATURES

Universal water tank can be hand filled for demonstration purposes or connected to a mains water supply.

Machine specification can be custom matched precisely to clients requirements.

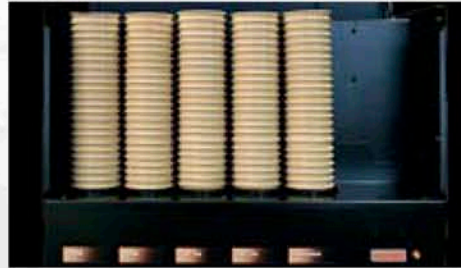
Available as a free vend machine or fitted with full electronic coin mechanism which accepts all coins and token.

Freely available, on demand hot water (manual machine) or timed dispense with coin control options on automatic machine.

I-Key cashless payment system compatible.

Convenient side mounted storage system for sugar sachets, stirrers, etc.

The Minicup Flex by DarenthMJS provides an ideal solution for the smaller user who requires a simple and extremely cost effective vending solution. This remarkable little machine features a highly flexible specification enabling it to be easily customised to meet individual requirements.



Internal view of 5 selection (manual) machine



Internal view of 4 selection (automatic) machine



Internal view of 3 selection plus internal sugar machine

The Minicup Flex is available in a range of graphics and branding options. Please ask your DarenthMJS authorised dealer for latest details.

The **MINICUP**  
flex  
MJS



# TOTAL DESIGN & MANUFACTURE

## DRINKS MENU AND CAPACITY

### Selections:

5 (Manual), 4 (Automatic) or 3 plus internal sugar.  
Optional side mounted sugar dispenser available.

### In-cup (please specify 71,73 or 76mm):

39 per selection = 195 cups total  
(5 selection machine).

### Sealed cup (73mm):

24 per selection = 120 cups total  
(5 selection machine).

### Sugar:

Please specify pre-packed bottle (1 ltr) or refillable jar (1.1 ltr).

## WATER REQUIREMENTS:

Hand filled for demonstration purposes or connected to a mains water supply.

Mains water connection via 3/4" BSP fitting (connection hose available).

Mains water pressure 1.5 - 10 bar (0.15 Mpa - 1Mpa).

## COIN CONTROL

Available as either a free vend machine, or with full electronic coin mechanism which accepts all coins and token.

Accumulated credit allows multiple vends to be made.

Free vend master override switch.

I-Key cashless payment system compatible.

## POWER REQUIREMENTS:

220-240 V, 50 Hz, single phase

2.5 KW, 13 A plug fuse

Machine fitted with 1.8 metre mains lead

## OPTIONS

Matching base cabinet providing large (lockable) storage space together with convenient drink preparation area.

High quality water filtration system for optimum drink quality.

Water booster pump for superior drink mixing.

Extended width drip tray offering additional and extremely useful storage area.

IceBreak can dispenser offering five selections of *ice cold* cans.

SnackBreak MINI offering a wide choice of up to 32 snack, crisp, confectionery, PET bottle and healthy eating options.

WaterBoy rehydration station serving extremely high quality Brita filtered, chilled or carbonated water.



## DIMENSIONS (WxHxD):

Machine: 560mm x 555mm x 360mm

Cabinet (optional): 560mm x 910mm x 550mm

Machine & Cabinet 560mm x 1465mm x 550mm

## WEIGHT:

Machine: 26Kg

Cabinet: 24Kg



DarenthMJS Ltd have a policy of continual improvement and reserve the right to modify and/ or change specifications without notice.

All dimensions and capacities shown are approximate and for guidance only.  
E & OE.



DarenthMJS recommend and supply the complete range of EVERPURE water filtration technology.

